

## **In A Space Creative Hub Middle Wall Whitstable**

In the heart of Whitstable situated between the high street and the sea In A Space has procured a versatile, creative space now available for hire. The premises is a 5-minute walk from a bus stop, a choice of car parks and a 15-minute walk from Whitstable Railway Station.



The space available is on the ground floor of a two-story building. The space comprises 4 rooms suitable for varying art activities including exhibitions, workshops, pop-up markets and artist studio space.

In A Space will also be seeking funding to deliver accessible workshops for local residents and create opportunities for local artists.

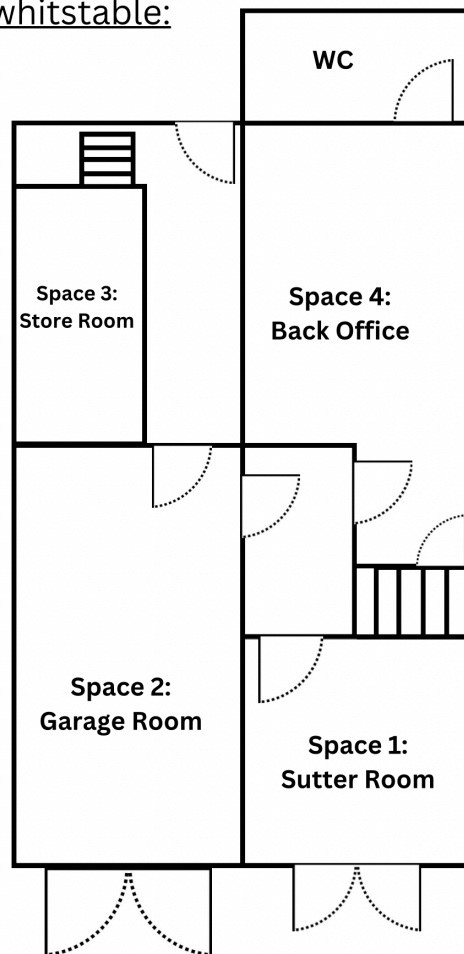
**Extra Info:**

We have free-standing easels, drawing boards, tables, desks and chairs available for use for those hiring the space, these are subject to availability.

All artists who want to lead workshops must have public liability insurance, this must be evidenced when applying for hire.



There is no on-site parking available, however, there are many local car parks which give easy access to the space. There will be limited on-site drop-off and parking available at weekends.

Floor plan for the creative hub whitstable:



Address	<a href="#">35 Middle Wall, Whitstable, CT5 1BJ</a>	
<b>Time Slots</b>		
<b>Weekday</b>	<b>Evening</b>	<b>Weekends</b>
Monday to Friday	Monday to Sunday	Saturday and Sunday
9:30 AM to 5:00 PM	5:30 PM to 9:00 PM	8:00 AM to 9:00 PM
<p>If you are interested in long term or recurring hiring of the space and wish to discuss discount prices or any other hiring queries contact us at <a href="mailto:info@inaspace.org">info@inaspace.org</a></p>		

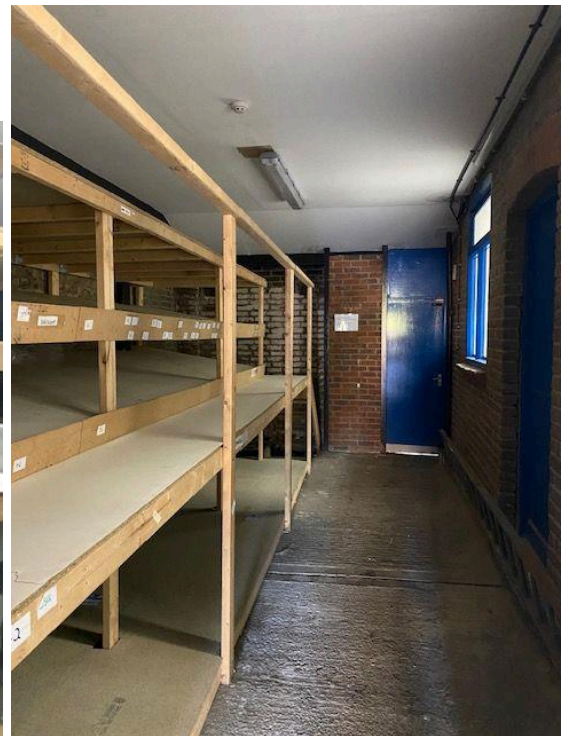
<b>Room 1: Shutter Room</b>		This Space is available 7 days a week however please be aware Monday to Friday cars are parked outside the double doors.	
Approximate Dimensions	3.75 m x 4.29 m	The space has perfect exhibition standard boarding and lighting. At present there is no glazing, glass door access will be in situ in the near future. The space benefits from inviting double-door access presenting great visibility for displayed work.	
Hire Options	<ul style="list-style-type: none"> <li>● Exhibition</li> <li>● Pop up Market</li> <li>● Workshop Space</li> <li>● Artist Studio</li> </ul>		
Available slot	Rates		
Weekday	£10 Per hour	£40 Per day	
Evening	£25 for full slot		
Weekends	£10 per hour	£75 Per day	£125 for full slot





<b>Room 2: Garage Room</b>		This Space is available at Weekends and evenings.  This large space with double doors opening onto a cobbled courtyard allows great visibility with exhibition standard board walls and adjustable spotlighting.	
Approximate Dimensions	7.03m x2.9m		
Hire Options	<ul style="list-style-type: none"> <li>• Exhibition</li> <li>• Pop up Market</li> <li>• Workshop Space</li> </ul>		
Available slot	Rates		
Evening	£25 Per full slot		
Weekends	£10 per hour	£50 Per day	£85 for full slot



<b>Room 3: Store Room</b>		This space is available on weekends with built-in shelving that is approximately 1 meter high and is ideal for displaying artwork like ceramics, sculpture or even small print browsers for pop up markets and exhibitions.
Approximate Dimensions	7.1 m x 2.6m	
Hire Options	<ul style="list-style-type: none"><li>• Exhibition</li><li>• Pop up market</li></ul>	
Available slot	Rates	
Weekend	£30 Per day	£50 for full slot



<b>Room 4: Back Office</b>		This flexible space is available 7 days a week and can be divided into 2 artists studios and a workshop space or the whole room can be hired for larger workshops and exhibitions.	
Approximate Dimensions	5.74m x 4.52m	Note: This room has access to the communal toilets.	
Hire Options	<ul style="list-style-type: none"> <li>● Exhibition</li> <li>● Workshop Space</li> <li>● Pop-up Market</li> <li>● Artist Studio</li> </ul>		
Available slot	Rates		
Weekday	£10 per hour	£40 per hour	
Evening	£25 Per full slot		
Weekends	£10 per Hour	£75 Per day	£125 for full slot
Artist Studio Space	Rates available on request		
			

<b>Full venue hire</b>		
Hire Options	<ul style="list-style-type: none"> <li>• Exhibition</li> <li>• Pop up Stall</li> </ul>	<ul style="list-style-type: none"> <li>• Workshop Space</li> <li>• Artist Studio</li> </ul>
Available slot	Rates	
Weekends	£170 Per day	£295 for full slot

<b>Space 1: Shutter Room</b>		Approximate Dimensions	3.75 m x 4.29 m	
Hire Options	Available slot	Rates		
<ul style="list-style-type: none"> <li>• Exhibition</li> <li>• Pop up Market</li> <li>• Workshop Space</li> <li>• Artist Studio</li> </ul>	Weekday	£10 Per hour		£40 Per day
	Evening	£25 for full slot		
	Weekends	£10 per hour	£75 Per day	£125 for full slot
<b>Space 2: Garage Room</b>		Approximate Dimensions	7.03m x2.9m	
Hire Options	Available slot	Rates		
<ul style="list-style-type: none"> <li>• Exhibition</li> <li>• Pop up Market</li> <li>• Workshop Space</li> </ul>	Evening	£25 for full slot		
	Weekends	£10 per hour	£50 Per day	£85 for full slot
<b>Space 3: Store Room</b>		Approximate Dimensions	7.1 m x 2.6m	
Hire Options	Available slot	Rates		
<ul style="list-style-type: none"> <li>• Exhibition</li> <li>• Pop up Markets</li> </ul>	Weekends	£30 Per day	£50 for full slot	
<b>Space 4: Back Office</b>		Approximate Dimensions	5.74m x 4.52m	
Hire Options	Available slot	Rates		
<ul style="list-style-type: none"> <li>• Exhibition</li> <li>• Pop up Market</li> <li>• Workshop Space</li> <li>• Artist Studio</li> </ul>	Weekday	£10 per hour		£40 per hour
	Evening	£25 Per full slot		
	Weekends	£10 per Hour	£75 Per day	£125 for full slot
	Artist Studio	Rates available on request		
<b>Full Venue</b>				
Hire Options	Available slot	Rates		
<ul style="list-style-type: none"> <li>• Exhibition</li> <li>• Pop up Market</li> <li>• Workshop Space</li> <li>• Artist Studio</li> </ul>	Weekends	£170 Per day	£295 for full slot	